

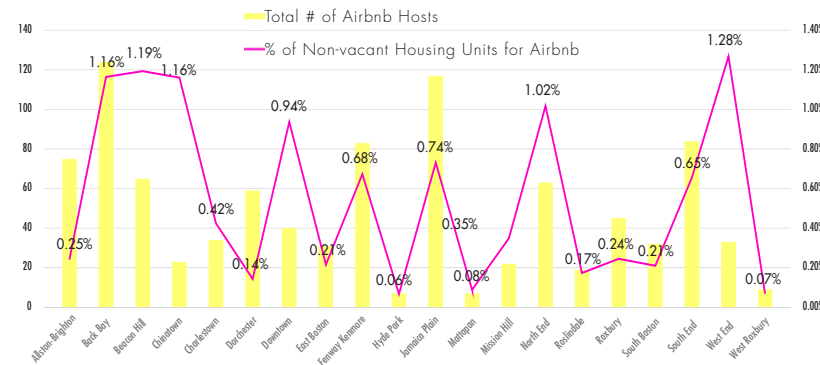
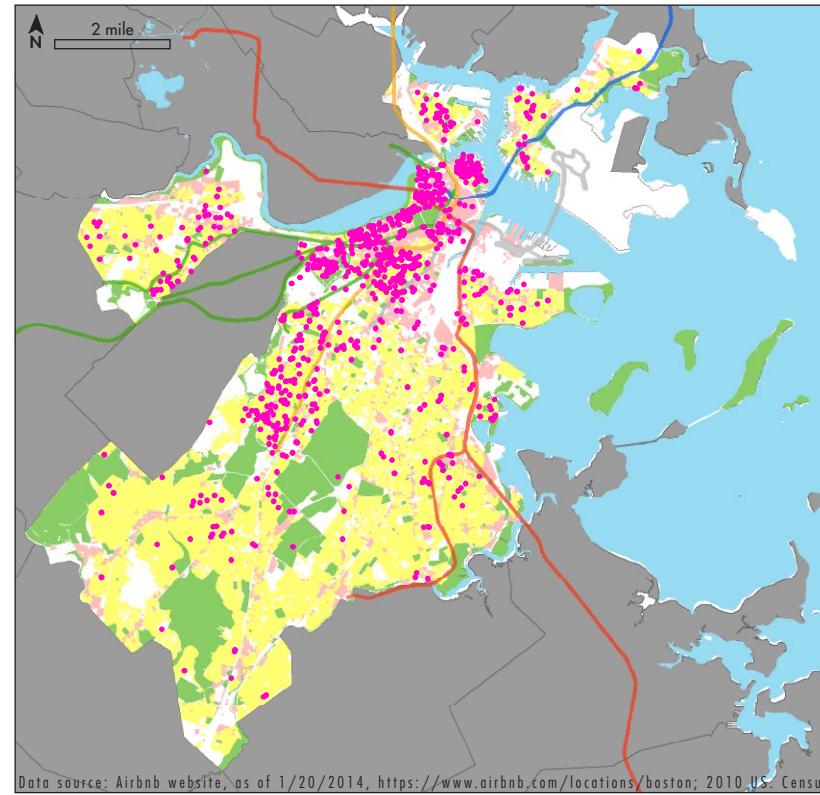
# VISUALIZING AIRBNB IN BOSTON

A GIS ANALYSIS OF SPACE-SHARING

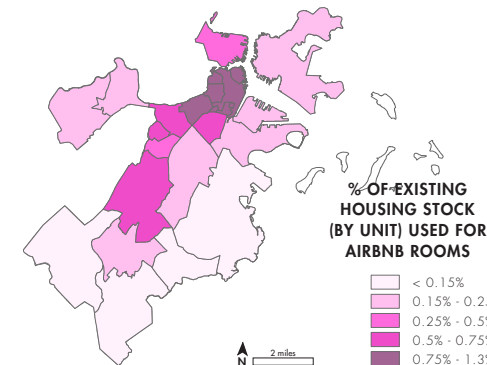
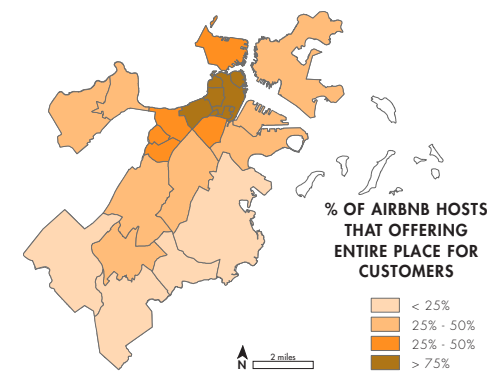
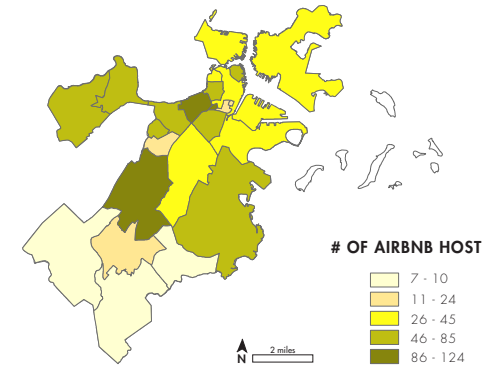
JANUARY 2014 / BOSTON, MA

Sharing economy refers to sharing underutilized assets (spaces, skills, stuff, etc.) for monetary or non-monetary benefits; the quality of sharing is ensured through peer-to-peer feedback. Airbnb is a C-to-C business model that provides a platform for people to share their living space. Studies in many cities shows that Airbnb has significant impact on local economy, and while representing new economic opportunities, also poses challenges to city regulation. This study is a preliminary spatial analysis on Airbnb supply in Boston.

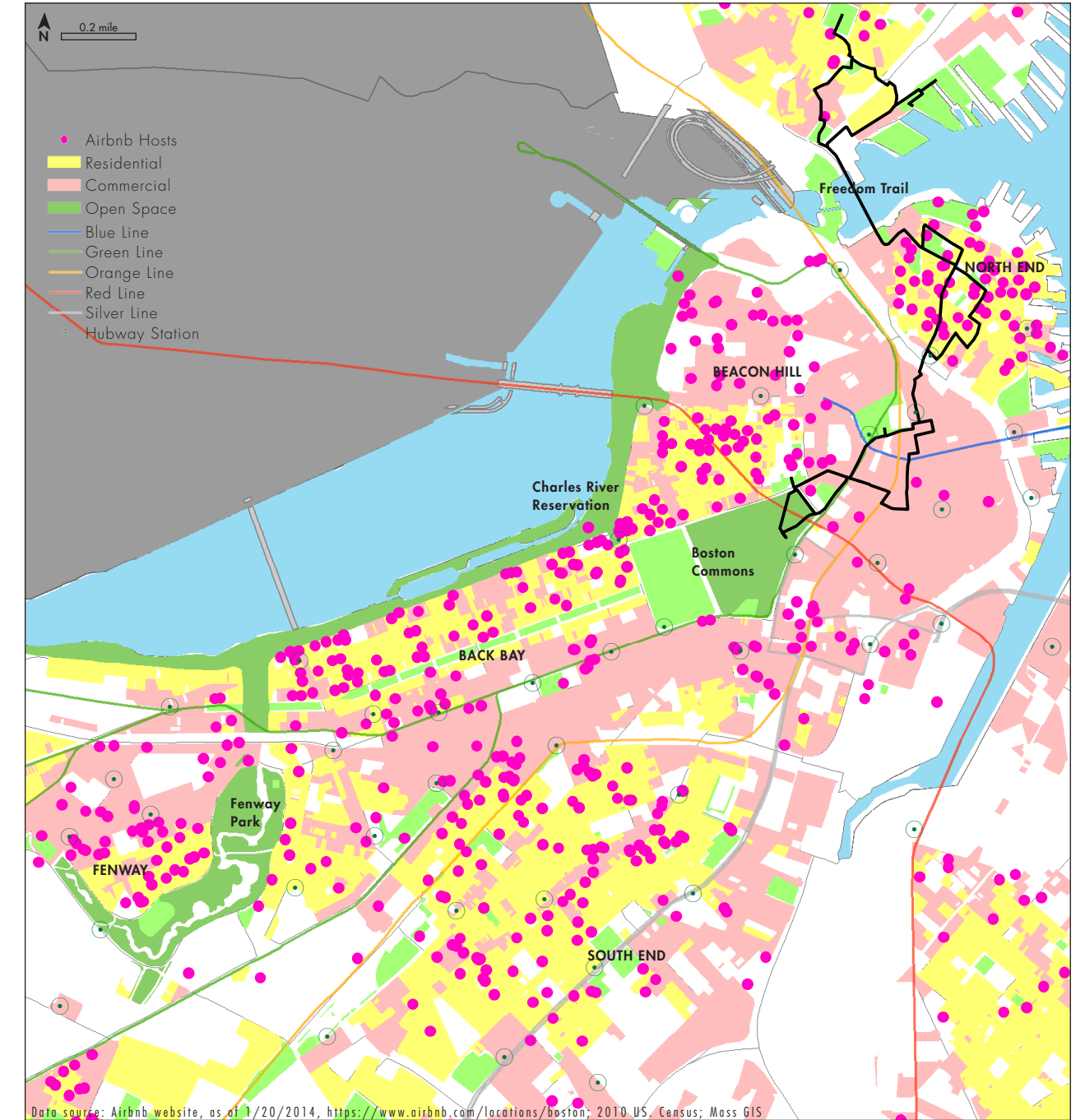
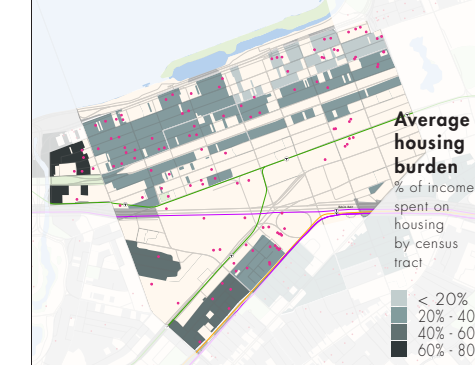
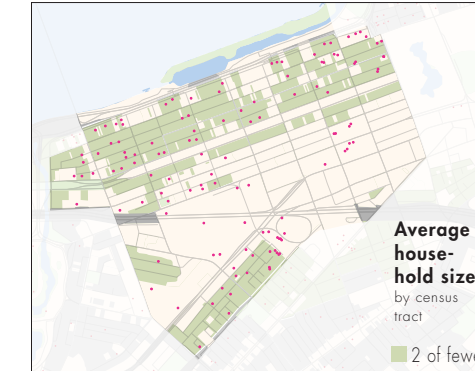
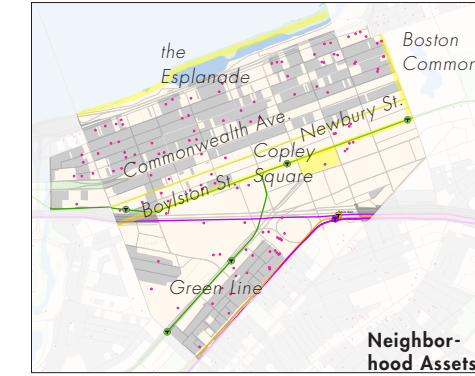
This project was part of the Sharing Space in a Regulated Place workshop at MIT, led by Corey Zehngebot, senior urban designer and architect of Boston Redevelopment Authority, and reviewed by a panel of researcher, business leaders and policy makers involved in Airbnb and other forms of sharing economy. The spatial analysis was conducted by a three-person team. I contributed to the analytical framework design, and was responsible for collecting and mapping Airbnb and neighborhood census data.



## CITY-WIDE DISTRIBUTION



## NEIGHBORHOOD CASE ANALYSIS



Sharing Space in a Regulated Place  
Department of Urban Studies + Planning, MIT

Team Members  
Cristen Jones, Yuqi Wang, Leo Goldberg

Instructors  
Corey Zehngebot (Boston Redevelopment Authority)